

Application software

IND690formXP

The new version of the successful IND690formXP formula-weighing software comes with optimised functions and substantially higher performance. Precise mixing of stored formulas is made easy and secure by interconnected databases.



**Formula weighing with
eXtra Performance.**

METTLER TOLEDO

So your mixtures are always right the first time.

IND690formXP makes your work more efficient.

Formulas can be managed and used quickly, simply and securely!

Formula

Components

Job No.

Ident D

Ident E

Ident F

- Rugged, waterproof housing, protected to IP69K
- BIG WEIGHT® display – for easy reading, even from a distance
- Smooth, waterproof keypad overlay – durable and easy to clean
- 4 different scales connectable – for maximum formula-weighing accuracy
- Codes A–F for clear identification of formula-weighing data
- Interfaces allow easy connection of external systems



IND690formXP – the easy way to tailored weighing solutions!

No matter whether you work in a harsh industrial environment or in a laboratory, formXP formula-weighing software always has the right solution for your specific application. This is because it can be connected to a wide assortment of METTLER TOLEDO scales with different resolutions and weighing ranges.

IND690formXP for successful formula weighing in the **chemical, pharmaceutical, and food industries.**



DATE	07.06.05
TIME	12.47.56
FORMULA NO.	1
FORMULA ID.	52
LOT NUMBER	A1
FORMULA NAME	Cream Cake
COMPOUND COUNT	5
PRE MESSAGE	1.400 kg
POST MESSAGE	0.070 kg
POST MESSAGE	1
RESCALING	0

COMPOUND	Baking powder
CHARGE NUMBER	QS114/10.05.05
RAW MAT. ID.	713

1. DISPENSED WT 0.205 kg

COMPOUND	Baking powder
CHARGE NUMBER	QS114/10.05.05
RAW MAT. ID.	713

1. DISPENSED WT 0.501 kg

COMPOUND	Flour
CHARGE NUMBER	QS248/12.05.05
RAW MAT. ID.	14

2. DISPENSED WT 0.510 kg

BATCH ID	B40
BATCH NET	1.435 kg
GROSS	1.535 kg
TARE	0.100 kg

BATCH ID	B41
BATCH NET	1.410 kg
GROSS	1.510 kg
TARE	0.100 kg

Information at a glance

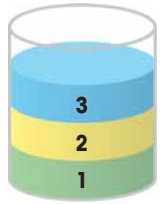
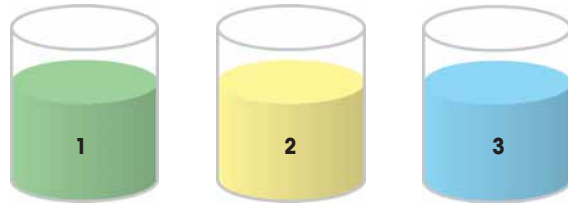
FormXP prints reports with customer-specific data – providing the manufacturer with seamless documentation of what formula was weighed when, where and how.

Safety at work

An incorrectly mixed formula can have unpleasant consequences – for the consumer as well as the manufacturer! If components are recorded with a barcode reader you can be sure that the correct ingredients go into the mixture. You can even specify which component must be weighed in what sequence to ensure everything is done according to plan.

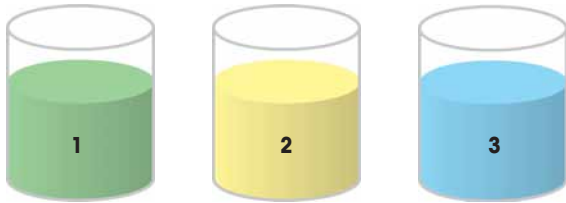
Formula weighing with stored formulas

No matter whether you are weighing a formula into a single container, or individual components into separate containers, or mixing a number of batches – the formXP software already knows the characteristics of the specific application and industry.



Vertical formula weighing

Weighing all components into a single container



Horizontal formula weighing

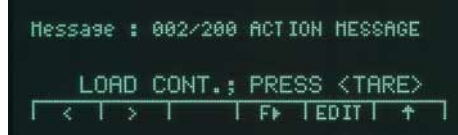
Weighing each component into a separate container

Batch formula weighing

Multiple weighings of separate components into individual containers



Select raw material

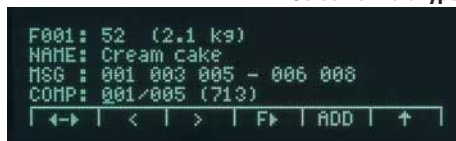


Messages

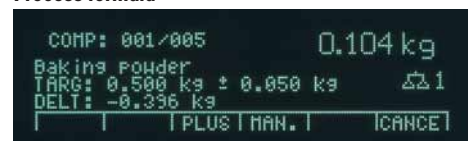
Trouble-free interconnection of processes

From recording raw materials to processing formulas – formXP guides the user easily and clearly. Thanks to numerous interconnected databases, the display can also show information such as work instructions, quantities and tolerances while the formula is being weighed.

Select formula type

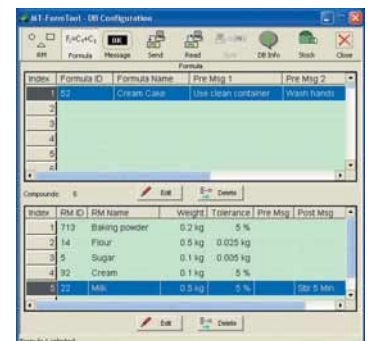
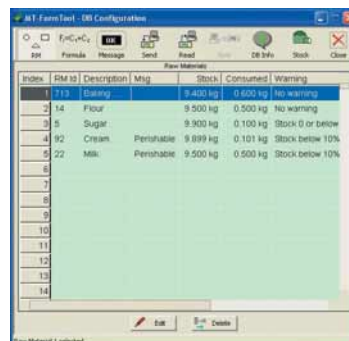


Process formula



Makes managing your data easy

FormXP includes FormtoolIXP, special PC software which enables you to edit message, component and formula data. A mouseclick on your PC gives you direct access to the IND690 or through it to an Ethernet system.



Working with stored formulas

Formula weighing	Vertical, horizontal or batch
Formula memory	<ul style="list-style-type: none"> • Up to 150 formulas • 30-character formula name • Uniquely identifiable 20-digit formula number • Up to 100 components per formula • 5 embedded messages per formula • Inputs for target weight, tolerances and max. 2 messages for components
Raw materials memory	<ul style="list-style-type: none"> • Memory for up to 500 raw materials • 30-character raw materials name • Uniquely identifiable 20-digit raw material number • Inputs for raw material inventory data and instructions for inventory management
Messages	200 display messages (e.g. user instructions) freely assignable to formulas or components. Message length 24 characters/digits
Variable target value	Variable batch quantity for each formula
Target value correction	If a component is overfilled, the remaining components are correspondingly corrected
DeltaTrac	Tolerance control with graphical display
Lot and batch number	Input for precise identification of lot and batch number
Barcode	Selectable barcode input for components
Password and user identification	Password and user identification prevent unauthorised access

General functions

Information function	Simple recall of total, item counter, component counter, container counter, identification data A–F and last manual input
Control signals	Via 4 I/O-690 and 4-690 relay box or RS485/422-690 and 8-690 relay box (accessory): <ul style="list-style-type: none"> • Output signals: DeltaTrac status (too few/ok/too many), scale stability • Input signals: on/off, zero, tare, enter keys • 8 separate, freely-definable switching points

ServiceXXL®
Tailored Services

www.mt.com

nefton
Ζύγιση
Σήμανση
Συμμόρφωση

Νεϋτων Τεχνολογίες ΑΒΕΕ
Γέρακα 113, Τ.Θ. 67934
15344 Γέρακας
Τηλ: 210 6654544
Fax: 210 6654545
marketing@nefton.gr
www.nefton.gr