

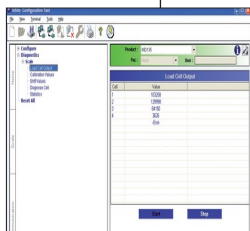
IND135 POWERCELL® Terminal

Simple Connection for Better Value



Flexible Connectivity

The value-oriented IND135 is the most economical and efficient connection between a METTLER TOLEDO POWERCELL® Scale, OverDrive™, OverDrive First™, or your existing PC software.



Superior Setup and Diagnostics

Through METTLER TOLEDO InSite™ or via the IND135 internal keypad and display. Setup, calibration, addressing and cell adjustment is accomplished in minutes. Monitor your scale for instant cell values, diagnostics and scale overloads.



Connect with confidence

IND135 delivers Weights and Measures approved weight via RS232, RS485, USB or optional Ethernet to report both the weight and the status of your scale.



Weight Display

The compact IND135 display shows gross weight, "data okay", and scale status.



Optional Driver Display



Savings over the long haul

The POWERCELL® is the first load cell to monitor cell diagnostics and transmit digitally corrected weight. It instantly reports errors to continually save our customers money on service and recalibration. POWERCELL® has been reducing customers' service costs for over 20 years.

IND135 Specifications

Configuration Enclosure Type Keypad Scale Types Number of Cells	Via InSite™ PC based tool and serial or Ethernet connection to terminal Rugged 304L stainless steel – suitable for wall mounting Internal – used for setup. External – Pushbutton zero Truck or Rail Scales with POWERCELL® load cells 14 POWERCELL® load cells
Net/Shipping Weights Dimensions (H x W x D) Environmental Protection Relative Humidity Power Supply Input Power Cable	1.5kg/2.5kg (3.3lb/5.5lb) 180x280x 50mm (7x 11 x 2 in) Intended for indoor use – sealed; top front and sides 10 to 95 % relative humidity non-condensing External Power Supply 100 – 240 VAC, 50/60 Hz 2.8 meter (9') total cable length
Temperature Wgts. & Meas. Approval Operating Storage	-10°C to 40°C (14°F to 104°F) -20°C to 50°C (-4°F to 122°F) -20°C to 60°C (-4°F to 140°F)
Display Weight Max Resolution Status LED's	6 Character, 12mm yellow LED 400 000 kg or 880 000 lb 10, 20, 50, 100, 200kg or 20, 50, 100, 200lb "Transmission Okay", "Center of Zero", "Range 1", "Range 2", "Scale in motion"
Communication Scale External Protocol Input Approvals Weights & Measures Electrical EMC Conformity	15Hz update rate Serial Ports: (one) RS232, (one) RS232 & RS485, (One) USB slave, Optional Ethernet Toledo Continuous output and Extended Toledo Continuous output with error messaging "Z" to zero the scale and "P" for remote print 10,000d NTEP COC # 06-107, 10,000e European Approval, 1 or 2 ranges UL 60950-1, CSA 22.2-60950-1, 73/23/EEC EN 60950-1:2001 US, Canadian, Europe 73/23/EEC (26-1000MHz 10 V/m)
Options	<ul style="list-style-type: none"> • Hazardous Area Barrier • 10base-T Ethernet connection. • Lightning surge protection for the incoming power. • METTLER TOLEDO OverDrive™ and OverDrive First™ Vehicle Scale Management Software • ADI310 Driver Display • Unattended Weighing Terminals

Features	Benefits
Flexible Connectivity	<ul style="list-style-type: none"> • Provides metrologically approved weight data to a vehicle weight application running on your PC. • Supports METTLER TOLEDO standard continuous protocol (Cougar/8530/JAGXTREME/IND780/IND310). • You choose the way you want the data: Serial, USB or optional Ethernet. • Weight data automatically transmitted – your PC commands the IND135 to re-zero the scale. • Your PC captures weight so the alibi function (Europe) is not required to be in the terminal. • Connection to a METTLER TOLEDO driver display.
Easy to Setup	<ul style="list-style-type: none"> • Set up the IND135 either via the display or via a PC using InSite™ configuration software. • InSite provides a common, easy to use, interface to set up the IND135, saving you time. • InSite software allows you to save and restore customer specific configuration data to/from the IND135. • Automatic cell addressing. Electronic adjustment of zero, span and shift values. Four point linearization.
Via InSite™	<ul style="list-style-type: none"> • Instantaneous update of all POWERCELL® Values. • Instantaneous failure notification for both terminal and each POWERCELL®. • Records scale overloads and peak weight. • Records Zero commands and command failures (zero commands outside of zero range).
Resistant to Lightning	The IND135 was successfully tested at an independent lightning laboratory to IEEE 4-1978 specifications to resist proximity lightning strikes to virtually eliminate cell and terminal failures – a primary cause of vehicle scale failure. Requires the use of the optional power surge protector, above.