

<b>Compact scales BBA4.. (Strain Gauge)</b>	3kg/40g*		6kg/80g*	
	certified/certifiable	not certifiable	certified/certifiable	not certifiable
Max. capacity (DualRange)	1.5/3kg	1.5/3kg	3/6kg	3/6kg
Certification class	III	–	III	–
Readability	0.5/1g	0.5/1g	1/2g	1/2g
Linearity (typ.)	±0.05/0.15g <sup>1)</sup>	±0.05/0.15g <sup>1)</sup>	±0.1/0.2g <sup>1)</sup>	±0.1/0.2g <sup>1)</sup>
Corner load tolerance (max.)	1g	1g	2g	2g
Reproducibility (typ.)	0.05/0.15g <sup>1)</sup>	0.05/0.15g <sup>1)</sup>	0.1/0.2g <sup>1)</sup>	0.1/0.2g <sup>1)</sup>
Temperature behaviour (max.)	20 ppm/°C (ppm = parts per million)			
Stabilization time (typ.)	0.5 ... 1 s			
Max. displayed resolution in points	60 000	60 000	60 000	60 000
Resolution (std.)	2 x 3 000d = e			
Intern. calculation resolution (Count/Count+/Smart+)	3 000 000 points			

<sup>1)</sup> BBA425 scales protection type IP65

<b>Compact scales BBK4.. (MonoBloc)</b>	3kg/1.6g*		6kg/1.6g* (Model XS/DXS)	
	certified/certifiable	not certifiable	certified/certifiable	not certifiable
Max. capacity	3100g	3100 g	6100g	6100g
Certification class	II	–	II	–
Readability	0.01g	0.01 g	0.01g	0.01g
Linearity (typ.)	±0.02g	±0.02 g	±0.02g	±0.02g
Corner load tolerance (max.)	0.1g	0.1 g	0.1g	0.1g
Reproducibility (typ.)	0.008g	0.008 g	0.008g	0.008g
Temperature behaviour (max.)	5 ppm/°C (ppm = parts per million)			
Stabilization time (typ.)	0.5...1 s			
Max. displayed resolution in points	3 100 000	3 100 000	6 100 000	6 100 000
Resolution (std.)	31 000e	31 000d	61 000e	61 000d
Intern. calculation resolution (Count/Count+/Smart+)	15 000 000 points			

<b>Weighing platforms PBA4.. (Strain Gauge)</b>	6kg/100g*	15kg/160g*	35kg/400g*	60kg/1200g*
	certified/certifiable	certified/certifiable	certified/certifiable	certified/certifiable
Max. capacity (DualRange)	3/6kg	6/15kg	15/35kg	30/60kg
Certification class	III	III	III	III
Readability	1/2g	2/5g	5/10g	10/20g
Corner load tolerance (max.)	2g	5g	10g	20g
Temperature behaviour (max.)	20 ppm/°C (ppm = parts per million)			
Stabilization time (typ.)	0.5 ... 1 s			
Max. displayed resolution in points	60000	75 000	70 000	60 000
Resolution (std.)	2 x 3 000 e MR			

<b>Weighing platforms K Line (MonoBloc)</b>	KA15s/10g*	KA32s/20g*	60kg/80g*	150kg/100g*
	certified/certifiable	certified/certifiable	certified/certifiable	certified/certifiable
Max. capacity	15kg	32kg	60kg	150kg
Certification class	II	II	II	II
Readability	0.1g	0.1g	10g	10g
Linearity (typ.)	±0.2g	±0.2g	± 1g	± 2g
Corner load tolerance (max.)	0.5g	0.1g	5g	5g
Reproducibility (typ.)	0.05g	0.1g	0.4g	0.5g
Temperature behaviour (max.)	±0.1 g/°C	±0.1 g/°C	±0.1 g/°C	±0.1 g/°C
Stabilization time (typ.)	< 1.5s	< 1.5s	< 1.5s	< 1.5s
Max. displayed resolution in points	1500000	3200000	600000	1500000
Resolution (std.)	15 000e	32 000e	60 000e	15 000e

15kg/160g*		35kg/400g*		60kg/800g*	
certified/certifiable	not certifiable	certified/certifiable	not certifiable	certified/certifiable	not certifiable
6/15kg	6/15kg	15/35kg	15/35kg	30/60kg	30/60kg
III	-	III	-	III	-
2/5g	2/5g	5/10g	5/10g	10/20g	10/20g
±0.2/0.2g <sup>1)</sup>	±0.2/0.2g <sup>1)</sup>	±0.5/0.5g <sup>1)</sup>	±0.5/0.5g <sup>1)</sup>	±1/1g <sup>1)</sup>	±1/1g <sup>1)</sup>
5g	5g	10g	10g	20g	20g
0.2/0.2g <sup>1)</sup>	0.2/0.2g <sup>1)</sup>	0.5/0.5g <sup>1)</sup>	0.5/0.5g <sup>1)</sup>	1/1g <sup>1)</sup>	1/1g <sup>1)</sup>



75 000	75 000	70 000	70 000	60 000	60 000
--------	--------	--------	--------	--------	--------

6kg/16g* (Model SM/DSM)		15kg/16g*		35kg/16g*	
certified/certifiable	not certifiable	certified/certifiable	not certifiable	certified/certifiable	not certifiable
6 100g	6 100g	15 100g	15 100g	35 100g	35 100g
II	-	II	-	II	-
0.2g	0.2g	0.5g	0.5g	0.1g	0.1g
±0.1g	±0.1g	±0.1g	±0.1g	±0.1g	±0.1g
0.2g	0.2g	0.5g	0.5g	1g	1g
0.08g	0.08g	0.08g	0.08g	0.08g	0.08g

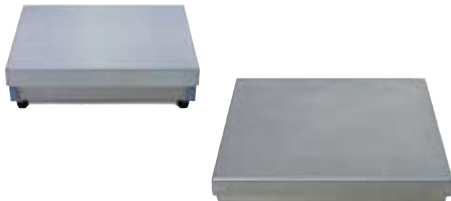


305 000	305 000	302 000	302 000	351 000	351 000
30 500e	30 500d	30 200e	30 200d	35 100e	35 100d

150kg/1800g*	300kg/4000g*	600kg/8000g*
certified/certifiable	certified/certifiable	certified/certifiable
60/150kg	150/300kg	300/600kg
III	III	III
20/50g	50/100g	100/200g
50g	100g	200g



75 000	60 000	60 000
--------	--------	--------



\* Typical minimum weight at 1% weighing tolerance  
 \*\*On-site measurements are required for precise determination of the minimum net initial weight

The K line has additional models with maximum capacities of up to 6 metric tons