

SmartDate® 5/128

thermal transfer coders ■ ■ ■



Our technology ■ ■ ■

Market leading thermal transfer overprinters deliver the highest quality printing at the fastest speeds on flexible packaging films, foils and labels.

The SmartDate® 5/128 delivers a new level of efficiency in wide format printing of information ranging from multi-pack to ingredient lists and nutritional statements.

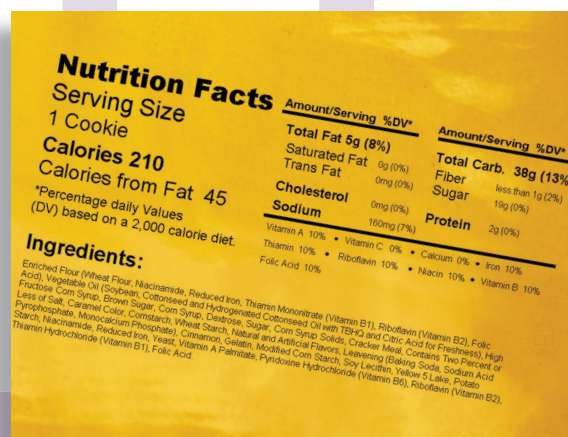
Your benefits ■ ■ ■

Productivity – All the functionality of the SmartDate® 5 but wider. Print large messages such as full nutritional labeling, ingredient or multi-pack applications.

Performance – Advanced design now available with up to a 128 mm x 150 mm (5" x 6") print area delivering two times the variable print format capacity, eliminating the need for additional printers on your packaging line.

Efficiency – Print multiple codes on multi-lane packaging lines. Minimize preprinted packaging film inventory by printing variable product and nutritional information simultaneously.

Simplicity – Intuitive touchscreen user interface with USB connectivity offers easy operation for fast, accurate code and ingredient changes.



markem·imaje

the team to trust ■ ■ ■

Print features ■ ■ ■

- Print speed:
 - Intermittent: 70-600 mm/s
 - Continuous: 20-600 mm/s
 - Pack rate: up to 120 packs per minute
- Print area:
 - Intermittent: 128 mm x 75 mm
 - Continuous: 128 mm x 150 mm
- Print features:
 - DRA (Digital Ribbon Advance): Electronics, mechanics and software providing a consistent gap between prints of 0.5 mm
 - Printing of real time clock, dates and auto updating best before end dates
 - Power saving mode
 - Automatic shift codes and serial numbers
 - Multiple variable user input fields with alpha-numeric texts
 - Integrated intermittent and continuous printing in one printer
- Print specifications: full True Type font support including non-Roman characters and symbols
- Barcodes: ITF, Code 39, EAN 128, EAN 8, EAN 13, UPC A, UPC E, RSS linear, PDF 417, data matrix, QR and Composite RSS

Operations ■ ■ ■

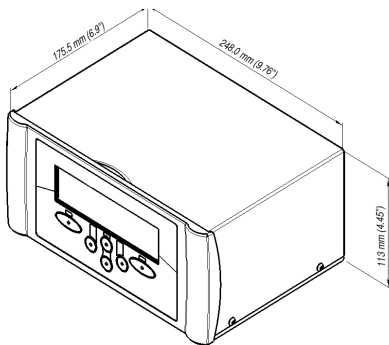
- Colour user LED interface (standard) backlit colour LCD TFT touch screen
- WYSIWYG print preview of printed message
- Display of remaining ribbon
- Full diagnostics
- Robust LED status indicators on the printer
- Webbing diagram for fast ribbon changes
- Hardware interface:
 - Inputs: "Print go" and 1 configurable input
 - Outputs: fault, warning, and 2 configurable outputs
 - Optional expansion PCB for additional inputs, outputs and communications ports
- Software interface:
 - USB for downloading messages, settings and data files (colour version only)
 - Communications protocols for PCs, PLC and packaging machines including web user interface
- Software:
 - CoLOS® Create message design software included
 - CoLOS® Create Pro (optional)
 - CoLOS® Enterprise for networking (optional)

Other characteristics ■ ■ ■

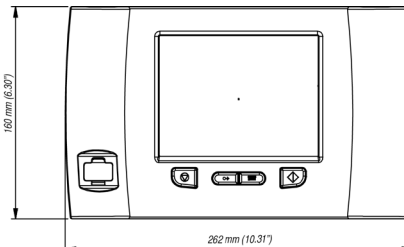
- Supplies: thermal transfer ribbon available in a variety of grades and colours
- Maximum ribbon length: 600 m
- Minimum ribbon width: 80 mm
- Maximum ribbon width: 130 mm
- Weight:
 - Printer: 10.2 kg
 - Colour controller: 4.5 kg
 - Mono controller: 4 kg
- Electrical power supply: 90-264 V, 47-63 Hz
- Typical current consumption 1 A @ 230 V, 2 A @ 100 V
- Air supply: 6 bar/90 psi (standard) dry, uncontaminated
- Air consumption: 1 ml/cycle

Options ■ ■ ■

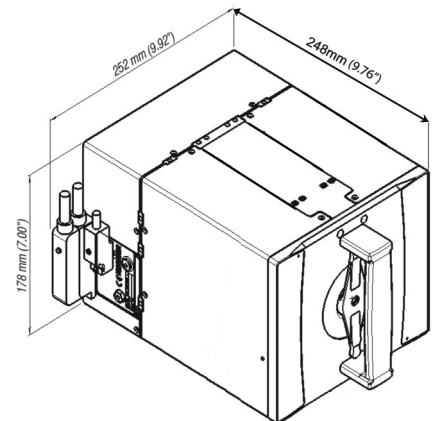
- Classic user interface backlit mono chrome graphic LCD Unicode character support, display of ribbon remaining and full diagnostics



Mono Chrome Controller



Colour Controller



To learn more, visit www.markem-imaje.com



We reserve the right to amend the design and/or specifications of our products without notice.

nefton
 Ζύγιση
 Σήμανση
 Συμμόρφωση

Νεύτων Τεχνολογίες ΑΒΕΕ
 Γέρακα 113, Τ.Θ. 67934
 15344 Γέρακας
 Τηλ: 210 6654544
 Fax: 210 6654545
 marketing@nefton.gr
 www.nefton.gr

9, rue Gaspard Monge
 B.P. 110
 26501 Bourg-lès-Valence Cedex - France
 Tel.: +33 (0) 4 75 75 55 00
 Fax: +33 (0) 4 75 82 98 10

150 Congress Street
 Keene, NH 03431
 United States of America
 Tel.: +1 800-258-5356
 Fax: +1 603-357-1835


 markem·imaje

A  Company